

Deployment best practices:

Constraints:

Windows Forms:

- 1) The Syncfusion assemblies that are used in the project during the build should be in the same location where the application exe(executable file) resides.
- 2) The Syncfusion assemblies that are used in the project during the build should be in the GAC, if the point1 does not complies with any of the deployers or users requirements.

Steps to follow:

Windows Forms:

- Before being built, in the references tab in the Solution Explorer, select all the Syncfusion assemblies and then change the 'Copy Local' property of the Syncfusion assemblies to 'true' and compile the project.

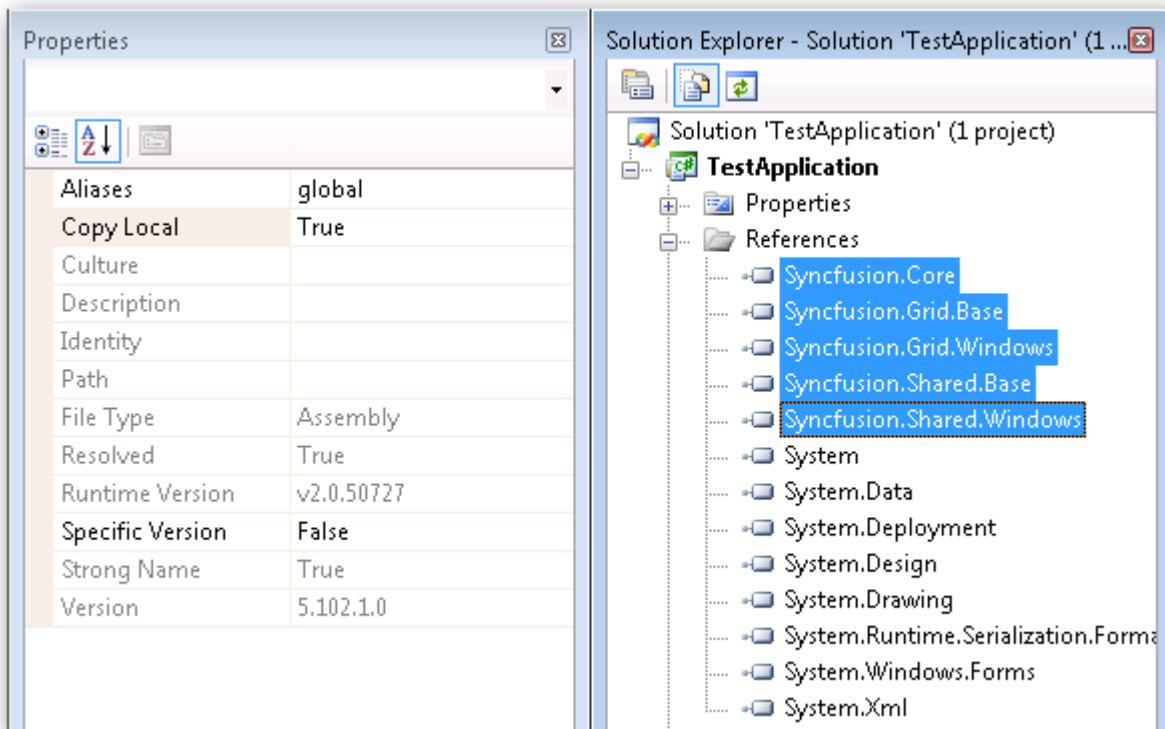


Fig. 1. CopyLocal property of Syncfusion Assemblies.

- Check that the licenses.licx file listed in the project has its 'Build Action' property to be 'Embedded Resource'.

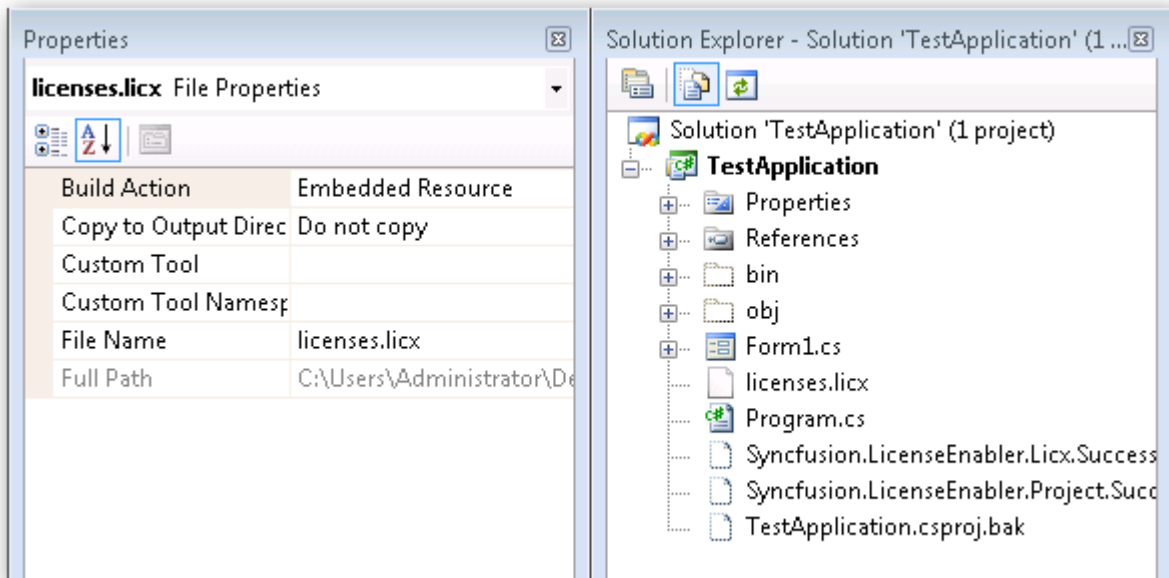


Fig. 2. BuildAction property of License file.

- Now you may see that the Syncfusion assemblies referenced in the project are copied to the output directory along with the application executable(bin/debug/).
- Deploy the exe along with the Syncfusion assemblies found there to the target machine. Be sure that these Syncfusion assemblies resides in the same location as the application exe in the target machine.
- Please note, for Windows Forms applications, placing these referenced Syncfusion assemblies in the GAC alone, in the target machine, will also work.