

# What's New for Windows Forms

Essential Studio Enterprise Edition 2013  
Volume 2



# Contents

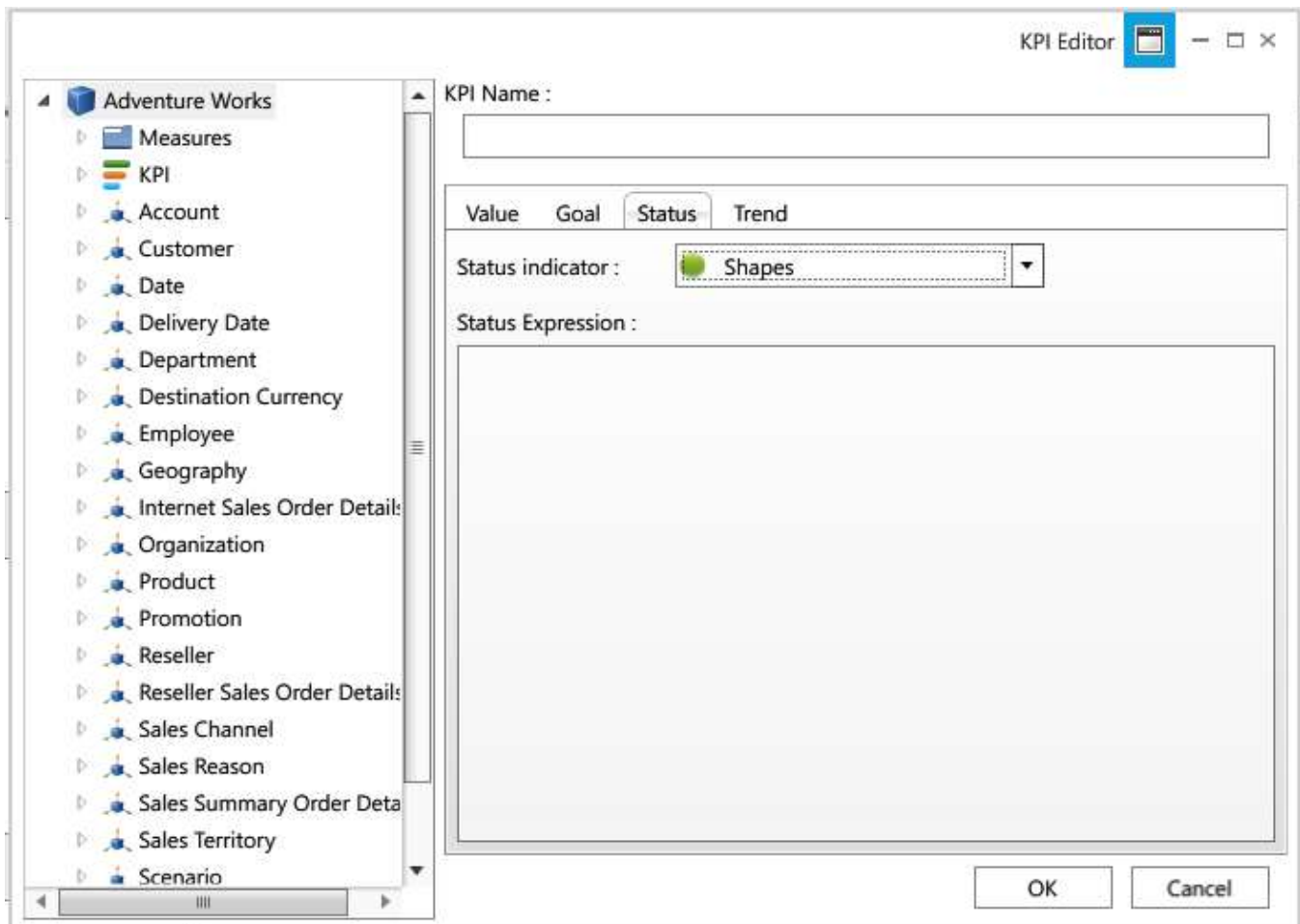
- Windows Forms ..... 3
  - All OLAP Controls ..... 3
    - Virtual KPI Support..... 3
  - Essential BI PivotGrid ..... 4
    - Conditional Formatting ..... 4
    - Editing and Updating ..... 5
  - Essential Diagram ..... 5
    - Dynamic Properties..... 5
    - Label Orientation ..... 6
    - Reject Connection Points..... 6
  - Essential Grid ..... 7
    - Paging Support..... 7
    - Customizable Windows UI Theme ..... 8
  - Essential Studio UI Controls..... 9
    - Carousel..... 9

# Windows Forms

- All OLAP Controls

## Virtual KPI Support

This feature enables users to create key performance indicators (KPIs) without having to store them in SSAS (SQL Server Analysis Services). This is useful when users want to define KPIs at run time, and also when showcasing data with these virtual KPI values in the OLAP Grid and Chart controls.



*Creating KPIs*

## ■ Essential BI PivotGrid

### Conditional Formatting

Conditional formatting changes the appearance of a specified cell range or pivot field based on a rule applied by users. The following rule types are supported:

**Format All Cells Based on Their Values:** Classifies data into three, four, or five groups, each represented by a threshold value that expresses the range. Users define an icon set, and each icon represents a particular range. The icons are applied to value cells in their corresponding range.

**Format Only Cells That Contain:** Applies formatting to value cells that either contain a specific value or meet defined criteria.

**Format Top or Bottom Ranked Values:** Applies formatting to the highest or lowest values in the value cells based on the specified values.

**Format Only Values That Are Above or Below Average:** Applies formatting to value cells whose values are more or less than an average or standard values in a range or summary element.

**Format Only Unique or Duplicate Values:** Applies formatting to value cells whose values are either identical or different from the other values in a range or summary element.

Conditional formatting is applicable only to numeric values in the pivot grid value cells.

		Canada					
		Alberta		British Columbia		Brunswick	
		Amount	Quantity	Amount	Quantity	Amount	Quantity
Bike	FY 2005	5,409,300	34	4,605,600	29	6,063,300	35
	FY 2006	1,695,900	11	2,647,200	15	2,162,600	17
	FY 2007	1,126,500	6	1,549,200	8	1,188,500	6
	FY 2008	372,300	3	353,100	3	941,400	5
	FY 2009	416,100	2	302,500	2	279,600	2
Bike Total		9,020,100	56	9,357,600	57	11,636,400	65
Car	FY 2005	1,410,300	8	1,482,900	10	304,500	2
	FY 2006	1,003,500	4	629,700	3	245,700	1
	FY 2007			87,300	1	528,800	2
	FY 2008	370,000	1			169,200	1
	FY 2009						
Car Total		2,683,800	13	2,199,900	14	1,048,200	6
Grand Total		11,703,900	69	11,557,500	71	12,684,600	71

**Rule Type**

Format All Cells Based on Their Values

Format Only Cells That Contain

Format Top or Bottom Ranked Values

Format Only Values That Are Above or Below Average

Format Only Unique or Duplicate Values

---

**Format Style**    IconSets: 5-Arrows Gray

**Summary Element**    Quantity

**Image**    5-Arrows Gray

---

**Value**    80    Value Type: Percent    >>>

60    Percent    >>>

40    Percent    >>>

20    Percent    >>>

Set

*Conditional Formatting Applied to a Pivot Grid*

## Editing and Updating

Pivot grid cell values can be dynamically edited and updated at run time, and any changes will be automatically reflected in the underlying data source. Calculation cells affected by run-time changes will also be updated.

Drop Filter Fields here:

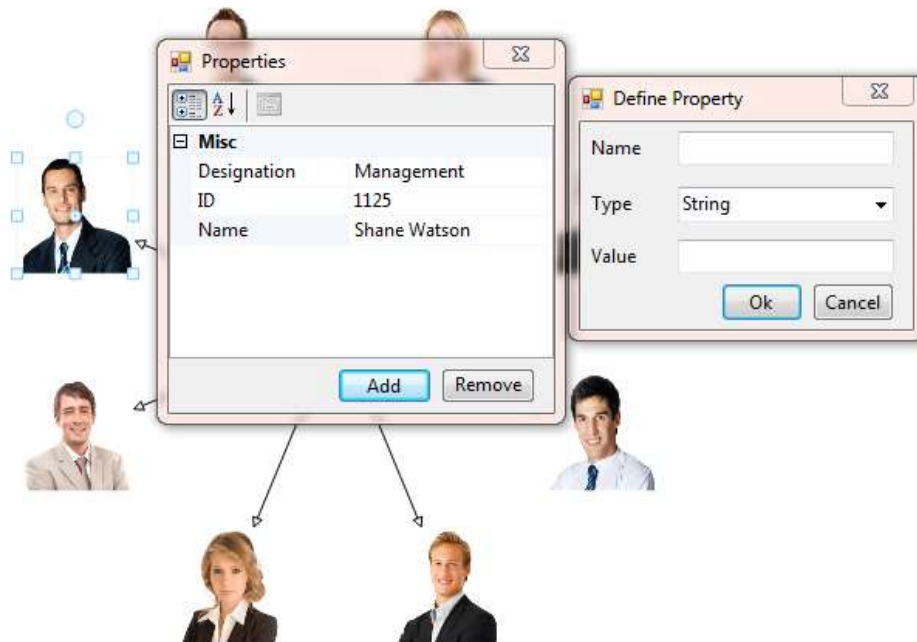
Amount		Quantity		Country	State						
Product	Date	Canada									
		Alberta		British Columbia		New Brunswick		Manitoba		Ontario	
		Amount	Quantity	Amount	Quantity	Amount	Quantity	Amount	Quantity	Amount	Quantity
Bike	FY 2005	\$6,389,600.00	39	\$4,354,200.00	29	\$6,851,700.00	37	\$6,137,500.00	34	\$6,650,400.00	
	FY 2006	\$3,013,500.00	18	\$1,007,100.00	5	\$1,414,500.00	10	\$1,741,200.00	11	\$2,054,400.00	
	FY 2008	\$1,022,700.00	5	\$891,600.00	5	\$1,831,800.00	10	\$645,900.00	6	\$1,192,500.00	
	FY 2009			\$168,200.00	1	\$490,200.00	4	\$315,300.00	3	\$540,000.00	
Bike Total		\$10,405,800.00	60	\$6,422,100.00	40	\$10,788,300.00	61	\$8,859,900.00	54	\$10,437,300.00	
Car	FY 2005	\$1,487,200.00	11	\$1,072,500.00	5	\$1,134,900.00	7	\$838,200.00	6	\$114,100.00	
	FY 2006			\$58,800.00	1	\$951,900.00	4			\$738,300.00	
	FY 2008	\$550,200.00	3	\$345,700.00	1	\$142,500.00	1	\$58,800.00	1	\$293,700.00	
	FY 2009			\$220,800.00	1			\$142,500.00	1	\$270,000.00	
Car Total		\$2,207,400.00	14	\$1,597,800.00	8	\$2,228,700.00	12	\$1,039,500.00	8	\$1,616,100.00	
Grand Total		\$12,613,200.00	74	\$8,019,900.00	48	\$13,017,000.00	73	\$9,899,400.00	62	\$12,053,400.00	

*Pivot Grid with Dynamic Editing Enabled*

- Essential Diagram

### Dynamic Properties

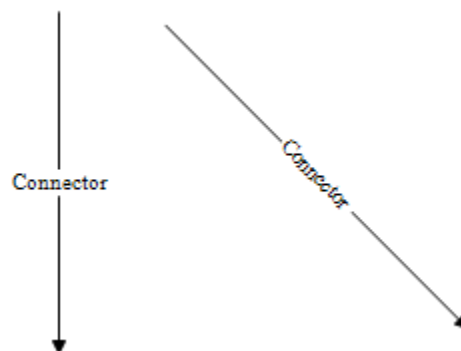
Dynamic properties allow additional information to be added and removed from diagram elements during run time. They are key-value pairs, and can be serialized when saving a diagram. This feature is available for both diagram nodes and line connectors. An editor has been implemented to make adding and editing the dynamic properties of a node or connector easier. Any type of data can be added as a dynamic property, such as strings, integers, Booleans, singles, or doubles.



***Dynamic Properties in a Diagram***

### Label Orientation

Orientation support for labels features two modes: horizontal and auto. The horizontal mode always displays the label horizontally, regardless of the associated diagram object's orientation. In auto mode, labels automatically rotate based on the diagram object's rotation angle.



***Horizontally Oriented (Left) and Automatically Oriented (Right) Labels***

### Reject Connection Points

Incoming and outgoing connections from connection points can be discarded. When a connection point's type is set to **Reject**, the prohibition sign will be displayed when users attempt to connect a line connector to it.



**Rejected Connection**

- Essential Grid

**Paging Support**

Paging support has been provided in Essential Grid for Windows Forms to improve the performance of the Grid and GridGrouping controls. This feature enables you to load data in an efficient way by storing and retrieving records in pages. Each page consists of less than a hundred records, thereby decreasing the load time.

Filters have also been customized to perform filtering only on the hundred items displayed anytime on the current page. Navigation through the records is performed by using the arrow buttons of the new record navigation control displayed at the bottom of the page.

: 100 Items					
SNo	StudentID	Department	Year	Location	
Y	Y		Y	Y	Y
01	S01	MECHANICA	III	TRICHUR	
02	S02	MARINE	II	BILASPUR	
03	S03	BIO-TECH	II	HUBLI	
04	S04	AERO	II	TRICHUR	
05	S05	EEE	I	CHITHOOR	
06	S06	CIVIL	I	CUTTACK	
07	S07	CIVIL	I	BILASPUR	
08	S08	ECE	III	CHENNAI	
09	S09	AERO	III	GWALIOR	
10	S10	MARINE	II	CHITHOOR	
11	S11	BIO-TECH	II	GWALIOR	
12	S12	AERO	III	HUBLI	
13	S13	EEE	III	HUBLI	

Page 1 of 1000

**Paged Grid Records**

## Customizable Windows UI Theme

The Windows UI-style theme of the Grid and GridGrouping controls can be customized to any color. Users can set the primary theme color, mouse hover color, and selected header cell color. Additionally, users can change the color of the group drop area in the GridGrouping control.

	A	B	C	D	E	F	G	H	I
1	<b>Push Buttons</b>								
2	PushButton Cells - supports Flat, Raised and Sunken styles								
3									
4									
5			Flat		Raised		Sunken		
6									
7									
8	<b>Radio Buttons</b>								
9	RadioButton cell type enables multiple radio buttons in a cell and their behavior is grouped								
10									
11									
12		Button 0 <input checked="" type="radio"/>		Disabled <input type="radio"/>		Button 2 <input type="radio"/>		Button 3 <input type="radio"/>	
13									
14									
15	<b>CheckBoxes</b>								
16	Checkbox Cells - supports triState/disabled states								
17									
18									
19			<input type="checkbox"/> Click Me		<input checked="" type="checkbox"/> TriState		<input checked="" type="checkbox"/> Disabled		
20									
21									

**Grid with Theme Color Set to Pink**

Customers Drag a column header here to group by that column.

Orders Drag a column header here to group by that column.

	Address	City	
▶	Obere Str. 57	Berlin	Alfreds Futterk
▶	Avda. de la Constitución 2222	México D.F.	Ana Trujillo Err
▶	Mataderos 2312	México D.F.	Antonio Morer
▶	120 Hanover Sq.	London	Around the Ho
▶	Berguvsvägen 8	Luleå	Berglunds snat
▶	Forsterstr. 57	Mannheim	Blauer See Del
▶	24, place Kléber	Strasbourg	Blondel père e
▶	C/ Araquil, 67	Madrid	Bólido Comida
▶	12, rue des Bouchers	Marseille	Bon app'
▶	23 Tsawassen Blvd.	Tsawassen	Bottom-Dollar
▶	Fauntleroy Circus	London	B's Beverages
▶	Cerrito 333	Buenos Aires	Cactus Comida
▶	Sierras de Granada 9993	México D.F.	Centro comerc
▶	Hauptstr. 29	Bern	Chop-suey Chi
▶	Av. dos Lusíadas, 23	São Paulo	Comércio Min
▶	Berkeley Gardens 12 Brewery	London	Consolidated t

**GridGrouping Control with Customized Theme and Group Drop Area Colors**

## ■ Essential Studio UI Controls

### Carousel

The Carousel control is a circular conveyor on which objects are displayed and rotated. The Carousel control provides a 3-D interface for displaying objects with interactive navigation. The Carousel control also supports different paths for objects in a carousel view, and provides additional features for image objects like image preview, which allows users to select an image from the carousel for a closer view. Other features include user-defined highlight colors, which add a highlighted border around each display image, and shadow colors, which add a colored shadow over the image. The perspective and transition speed of carousel items can also be changed.



*Carousel Control*