

What's New

Essential Studio ASP.NET Edition

2013

Volume 1



Contents

- ASP.NET 3
 - All BI Products..... 3
 - MDX Query Binding with Drill-Up and Drill-Down Operations..... 3
 - Essential BI Client..... 3
 - KPI Report..... 3
- Essential Diagram 4
 - Client-Side Enhancements..... 4

ASP.NET

- All BI Products

MDX Query Binding with Drill-Up and Drill-Down Operations

In all business intelligence controls, users can perform drill-up and drill-down operations by using MDX queries to manipulate data at different levels.

	▶ Australia	▶ Canada	▶ France	▶ Germany	▶ United Kingdom	▶ United States	Total
Internet Sales Amount							
▶ FY 2002	\$2,568,701.39	\$573,100.97					\$7,072,084.24
▶ FY 2003	\$2,099,585.43	\$305,010.69					\$5,762,134.30
▶ FY 2004	\$4,383,479.54	\$1,088,879.50					\$16,473,618.05
▶ FY 2005	\$9,234.23	\$10,853.70					\$50,840.63
Total	\$9,061,000.58	\$1,977,844.86					\$29,358,677.22

```
SELECT NON EMPTY ({{Hierarchize({DrilldownLevel({[Customer].[Customer Geography].[All Customers]}})} * {[MEASURES].[Internet Sales Amount]}} ) dimension properties member_type ON COLUMNS, NON EMPTY ({{Hierarchize({DrilldownLevel({[Date].[Fiscal].[All Periods]}})} ) dimension properties member_type ON ROWS FROM [Adventure Works] CELL PROPERTIES VALUE, FORMAT_STRING, FORMATTED_VALUE
```

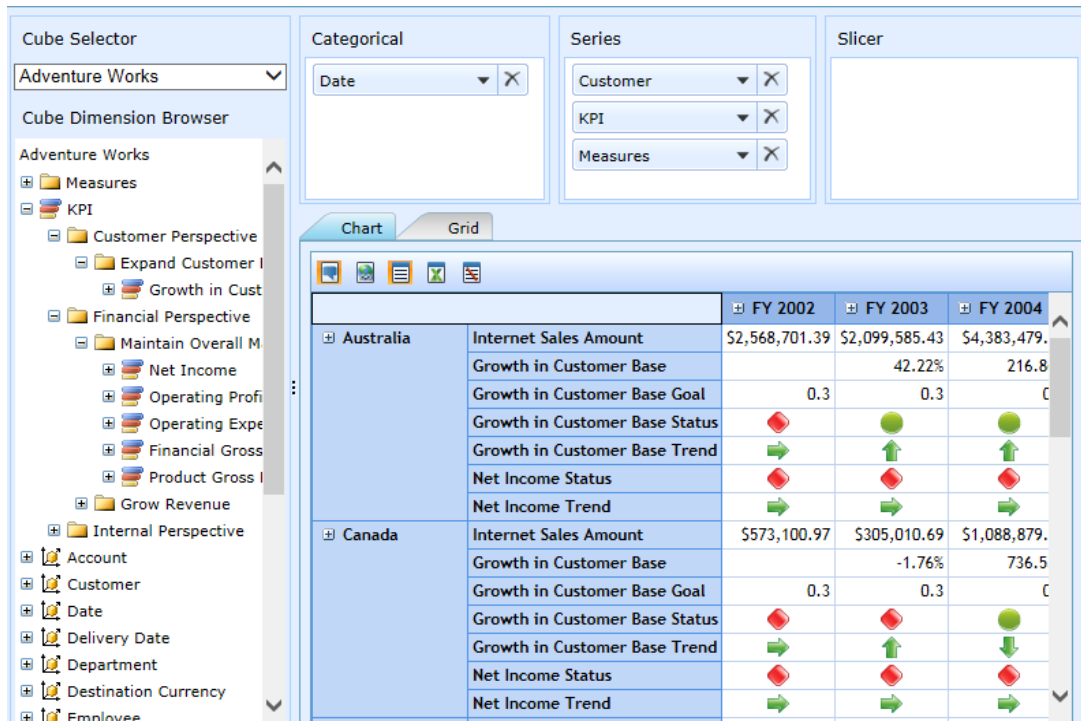
Manipulating OLAP Data through MDX Queries

- Essential BI Client

KPI Report

The Key Performance Indicator (KPI) report generates a graphical representation of data dimensions. A KPI is a set of quantifiable measures that a company or industry uses to monitor its performance to meet strategic and operational goals. KPIs vary between companies and industries, depending on their priorities and performance criteria.

KPIs help users periodically assess the performance of their organization, business unit, departments, and employees.



KPI Report

- Essential Diagram

- Client-Side Enhancements

This feature allows users to update diagram node properties on the client side through a client-side API. This allows users to quickly change a part of the diagram instead of having to render the entire diagram from the server when a change is made. It improves the performance of the diagram by reducing the requests sent to the server.

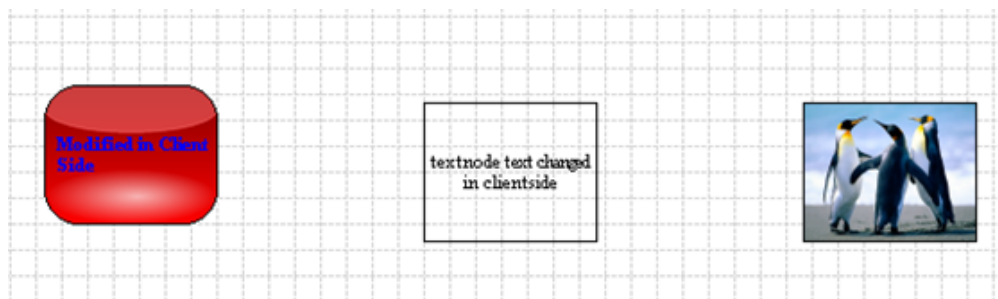


Diagram Nodes Edited on the Client-Side