

What's New

Essential Studio Business Intelligence Edition
2012 Volume 2



Contents

- All BI Products..... 3
 - Quartet FS ActivePivot Support in OLAP Controls 3
 - Localization Support..... 4
- Essential BI Client for ASP.NET 5
 - Showing MDX Query at UI Level..... 5
- Essential BI Client for WPF..... 6
 - Calculated Measures at UI level..... 6
- Essential BI Client for Silverlight..... 7
 - Calculated Measures at UI level..... 7
- Essential BI Grid for ASP.NET 8
 - Sort Data by Headers 8
 - Appearance and Performance Improvements 10
- Essential BI PivotGrid for Silverlight 11
 - Context Menu Support for Expand-and-Collapse Operations 11
 - ToolTip Support for Header and Value Cells..... 12
- Essential BI PivotGrid for WPF..... 13
 - ToolTip Support for Header and Value Cells..... 13
 - Context Menu Support for Expand-and-Collapse Operations 14
 - Editing and Updating 15
- Essential BI PivotGrid for Windows Forms 17
 - PivotGrid Control 17

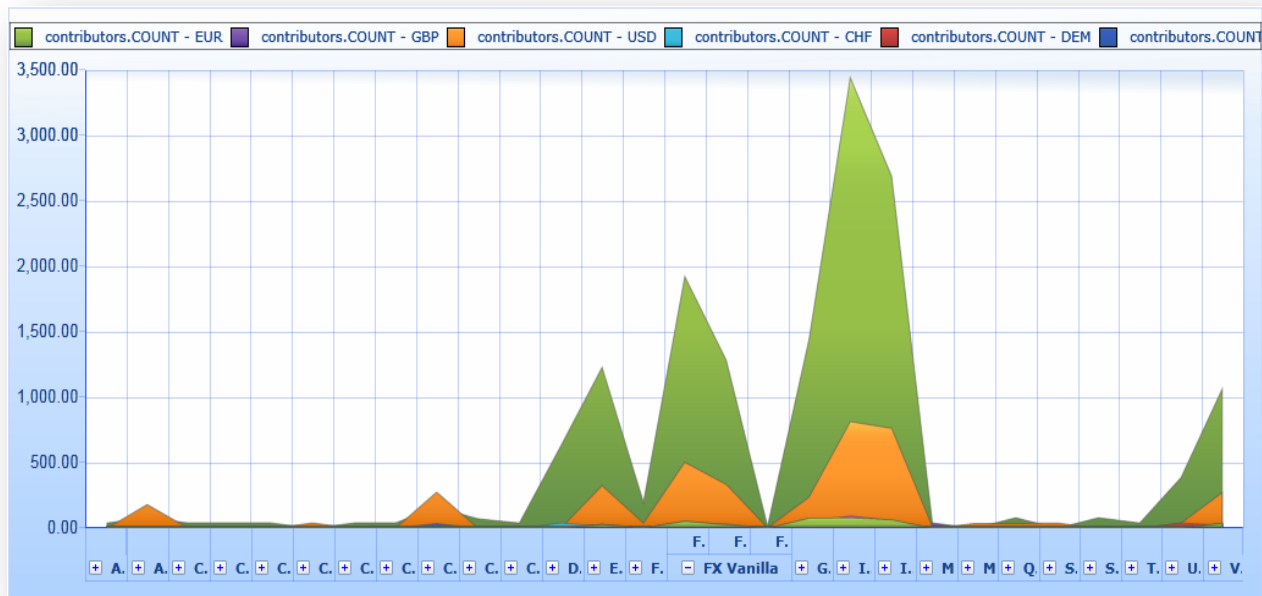
All BI Products

- Quartet FS ActivePivot Support in OLAP Controls

Syncfusion OLAP controls can now bind with ActivePivot server databases. Users can customize the data view by pivoting, slicing, and dicing using the ActivePivot service in an OLAP report. Users can also store the current view of the ActivePivot data and load it whenever required through OLAP reports.

	contributors.COUNT									Total
	EUR	GBP	USD	CHF	DEM	EGP	ILS	RUB	SAR	
▶ ABCP	40									40
▶ ABS	80		181							261
▶ CDO^2	40									40
▶ CDSNthDefault	40									40
▶ CDSNthLoss	40									40
▶ CLN CDS			40							40
▶ CcySwap	40									40
▶ Convertible Bond	40									40
▶ Corporate Bond	160		276			36				472
▶ Corporate Loan	72									72
▶ Covered Bond	40									40
▶ Debt Security	628			40						668
▶ EQ Derivative	1,229	26	325	16	14	16	28	31	28	1,713
▶ FX Derivative	198	3	39			3	3	3	3	252
▶ FX Vanilla	3,222	78	842	42	39	39	78	81	81	4,502
▶ Government Bond	1,436	40	236				76	40	76	1,904
▶ IR Derivative	3,442	85	815	40	55	40	80	95	80	4,732

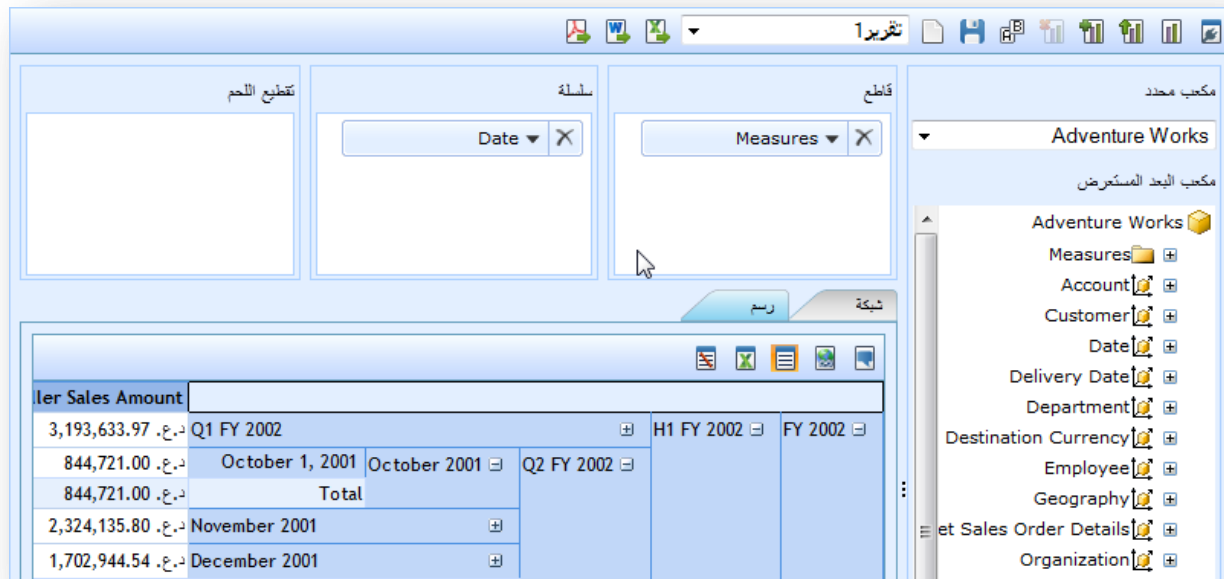
OLAPGrid Control with ActivePivot Data



OLAPChart Control with ActivePivot Data

■ Localization Support

Localization is the key feature for providing IT solutions for global users. This feature allows users to localize the control to a specific locale.

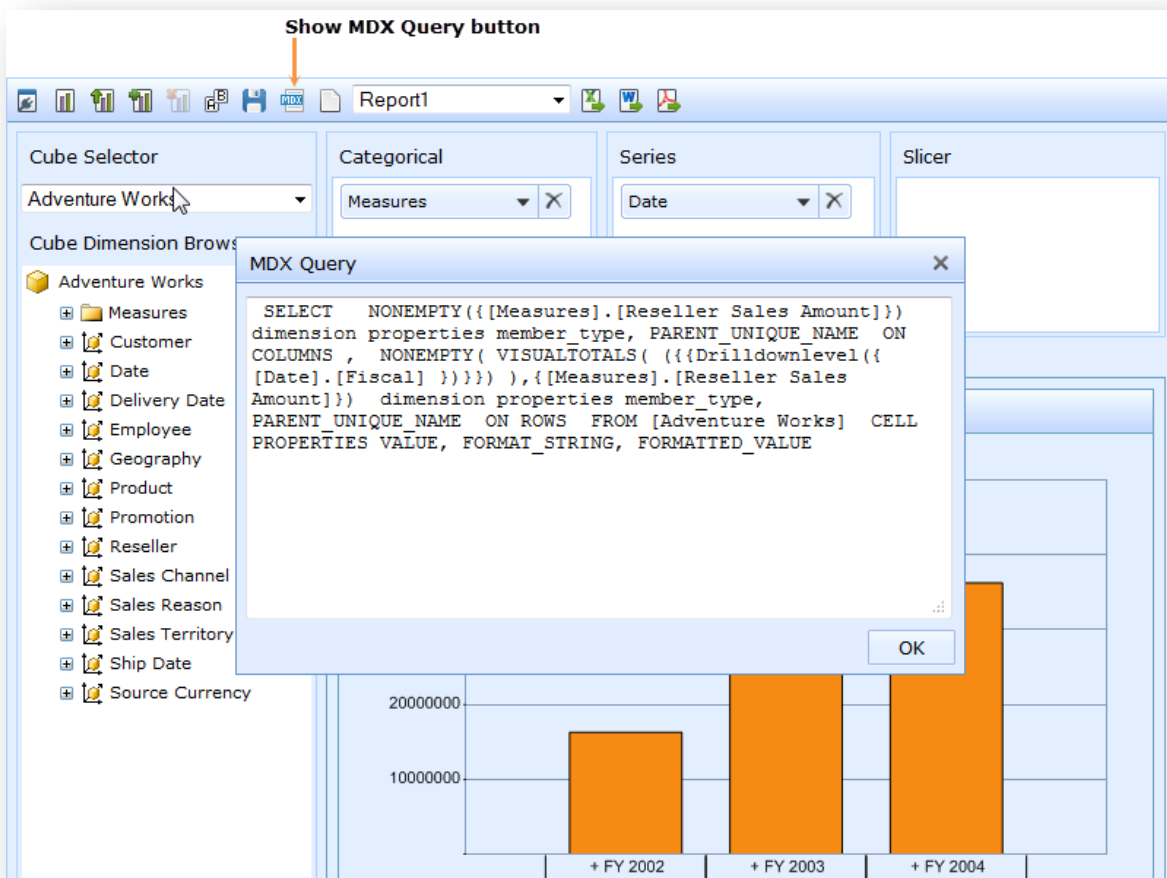


Localized Essential BI Client

Essential BI Client for ASP.NET

- Showing MDX Query at UI Level

This feature allows users to view the MDX query of the current report, which will be displayed in a separate **MDX Query** dialog by clicking the **Show MDX Query** button in the toolbar.

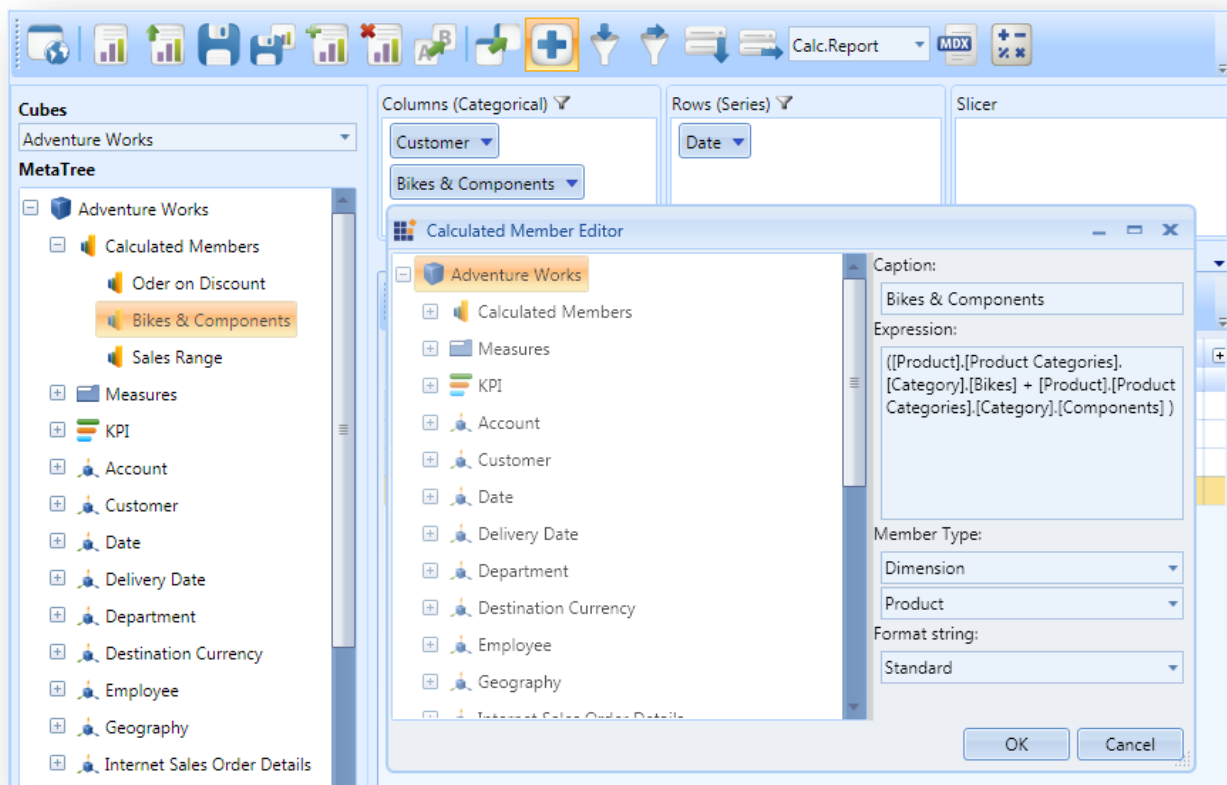


Showing the MDX Query of an OLAP Report

Essential BI Client for WPF

- Calculated Measures at UI level

Users can define any desired calculated measures and members of data from the existing measure by using the **Calculated Member Editor** dialog. They can also edit the created calculated measures and members as they desire.

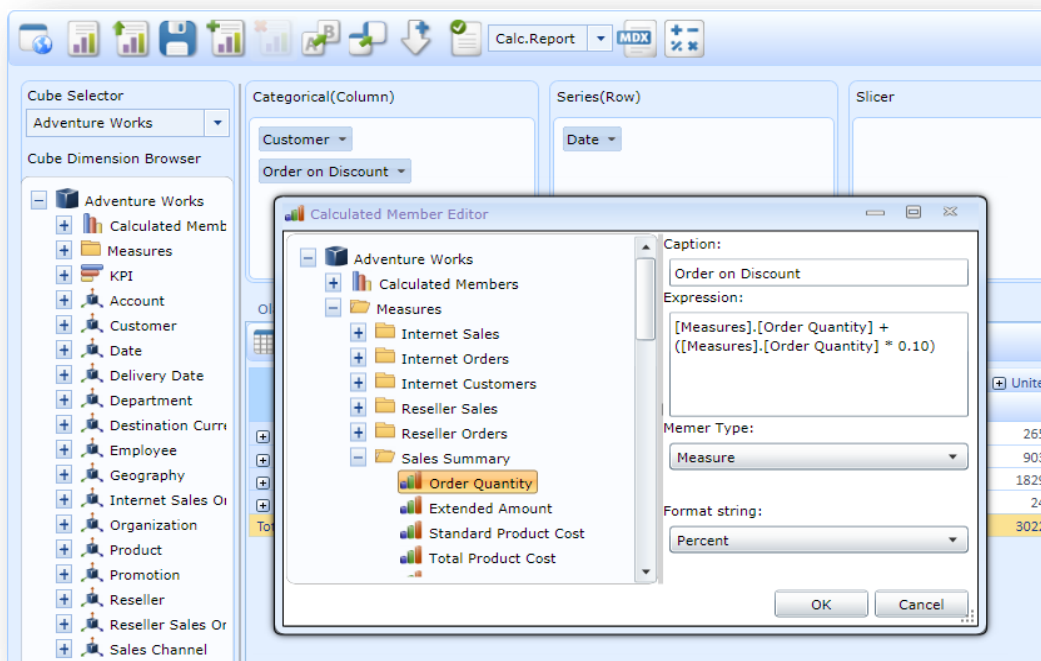


Calculated Member Editor

Essential BI Client for Silverlight

- Calculated Measures at UI level

Users can define any desired calculated measures or members of data from the existing measure using the **Calculated Member Editor** dialog. They can edit the created calculated measures or members as they desire.



Calculated Member Editor

Essential BI Grid for ASP.NET

- Sort Data by Headers

This feature enables users to sort relational data in a desired order. Users can choose any of the following display orders:

- Ascending:** Displays all values beneath the row and column header in ascending order.
- Descending:** Displays all values beneath the row and column header in descending order.
- Unspecified:** Displays all values beneath the row and column header in the order in which they were passed into the relational data.

			Canada			Canada Total	France		France Total
			Alberta	British Columbia	Brunswick		Charente-Maritime	Gers	
Bike	FY 2005	Quantity	6	5	7	18		22	22
		Amount	\$169,200.00	\$142,500.00	\$195,300.00	\$507,000.00		\$587,400.00	\$587,400.00
	FY 2006	Quantity	1		11	12	5	5	10
		Amount	\$29,700.00		\$293,700.00	\$323,400.00	\$142,500.00	\$142,500.00	\$285,000.00
	FY 2007	Quantity						7	7
		Amount						\$195,300.00	\$195,300.00
Bike Quantity			7	5	18	30	5	34	39
Bike Amount			\$198,900.00	\$142,500.00	\$489,000.00	\$830,400.00	\$142,500.00	\$925,200.00	\$1,067,700.00
Car	FY 2005	Quantity						4	4
		Amount						\$115,200.00	\$115,200.00
	FY 2006	Quantity							
		Amount							
Car Quantity							4	4	
Car Amount							\$115,200.00	\$115,200.00	

Data in Ascending Order

			United States			United States Total	United Kingdom	United Kingdom Total
			South Carolina	North Carolina	California		England	
Car	FY 2006	Quantity						
		Amount						
	FY 2005	Quantity			8	8		
		Amount			\$220,800.00	\$220,800.00		
Car Quantity					8	8		
Car Amount					\$220,800.00	\$220,800.00		
Bike	FY 2007	Quantity	6			6		
		Amount	\$169,200.00			\$169,200.00		
	FY 2006	Quantity						
		Amount						
	FY 2005	Quantity			6	6	6	6
		Amount			\$169,200.00	\$169,200.00	\$169,200.00	\$169,200.00
Bike Quantity			6	6	12	6	6	
Bike Amount			\$169,200.00	\$169,200.00	\$338,400.00	\$169,200.00	\$169,200.00	

Data in Descending Order

			France			France Total	Canada			Canada Total
			Gers	Charente-Maritime	Alberta		Brunswick	British Columbia		
Bike	FY 2006	Quantity	5	5	10	1	11		12	
		Amount	\$142,500.00	\$142,500.00	\$285,000.00	\$29,700.00	\$293,700.00		\$323,400.00	
	FY 2005	Quantity	22		22	6	7	5	18	
		Amount	\$587,400.00		\$587,400.00	\$169,200.00	\$195,300.00	\$142,500.00	\$507,000.00	
	FY 2007	Quantity	7		7					
		Amount	\$195,300.00		\$195,300.00					
Bike Quantity			34	5	39	7	18	5	30	
Bike Amount			\$925,200.00	\$142,500.00	\$1,067,700.00	\$198,900.00	\$489,000.00	\$142,500.00	\$830,400.00	
Car	FY 2005	Quantity	4		4					
		Amount	\$115,200.00		\$115,200.00					
	FY 2006	Quantity								
		Amount								
Car Quantity			4		4					
Car Amount			\$115,200.00		\$115,200.00					

Data in an Unspecified Order

■ Appearance and Performance Improvements

The overall appearance and performance of the OlapGrid control have been improved. Code optimization has been done at both the script level and code-behind level to improve performance.

The control's theming has been enhanced, and the following themes have been included as built-in options that can be applied through a property without requiring theme-related style sheets at the application level.

- Office 2007 Blue
- Office 2007 Black
- Office 2007 Silver
- Office 2007 Oliver
- Office 2010 Blue
- Office 2010 Black
- Office 2010 Silver

	▶ Australia	▶ Canada	▶ France	▶ Germany	▶ United Kingdom	▶ United States
	Internet Sales Amount					
▶ FY 2002	\$2,568,701.39	\$573,100.97	\$414,245.32	\$513,353.17	\$550,507.33	\$2,452,176.07
▶ FY 2003	\$2,099,585.43	Internet Sales Amount	70	\$593,247.24	\$696,594.97	\$1,434,296.26
▶ FY 2004	\$4,383,479.54	Value : \$573,100.97	75	\$1,784,107.09	\$2,140,388.50	\$5,483,882.67
▶ FY 2005	\$9,234.23	Row : FY 2002	95	\$3,604.83	\$4,221.41	\$19,434.51
Total	\$9,061,000.58	Column : Canada	71	\$2,894,312.34	\$3,391,712.21	\$9,389,789.51

Essential BI Grid

Essential BI PivotGrid for Silverlight

- Context Menu Support for Expand-and-Collapse Operations

Users can expand and collapse all or any desired row or column headers containing unique text using a context menu or programmatically.

The screenshot shows a PivotGrid interface with a context menu open over the 'Australia' header. The menu options are: Expand/Collapse, Expand Australia, Collapse Australia, Expand Entire Field, and Collapse Entire Field. The table data is as follows:

Product	Date	Amount	Quantity	State	Amount	Quantity
Bike	FY 2005	\$877,200.00	32	Australia	\$1,184,100.00	43
	FY 2006	\$732,000.00	26	New South Wales	\$455,600.00	16
	FY 2007	\$353,100.00	13	Victoria	\$1,392,900.00	51
	FY 2008	\$531,300.00	19	Queensland	\$680,400.00	24
	FY 2009	\$1,344,900.00	49	South Australia	\$2,127,300.00	77
Bike Total		\$3,838,500.00	139		\$6,395,700.00	231
Car	FY 2005	\$485,700.00	17	Queensland	\$802,500.00	29
	FY 2006	\$940,500.00	33	Victoria	\$621,000.00	22
	FY 2007	\$996,600.00	36	Queensland	\$1,293,300.00	47
	FY 2008	\$1,355,100.00	49	Queensland	\$1,231,500.00	45
	FY 2009	\$675,000.00	24	Queensland	\$1,591,800.00	58
Car Total		\$4,452,900.00	159		\$5,540,100.00	201
Grand Total		\$8,291,400.00	298		\$11,935,800.00	432

Expand-and-Collapse Options

- **ToolTip Support for Header and Value Cells**

ToolTips are provided for column, row, and summary headers, as well as summary and value cells. The row or column header displays the unique text as a ToolTip. Value cell ToolTips provide information about the cell and its row and column header values. Users can also customize the ToolTip with their own templates.

Queensland	South Australia	Tasmania	Victoria	
\$1,749,900.00	\$1,238,100.00	\$1,094,100.00	\$940,200.00	\$5,899,500.00
\$1,184,100.00	\$456,600.00	\$1,462,500.00	\$234,600.00	\$4,069,800.00
\$1,392,900.00	\$531,300.00	\$1,203,000.00	\$910,500.00	\$4,390,800.00
\$680,400.00	\$2,127,300.00	\$1,833,900.00	\$1,833,900.00	\$6,126,900.00
\$1,388,400.00	\$436,200.00	\$2,059,500.00	\$2,059,500.00	\$5,371,500.00
\$6,395,700.00	\$4,789,500.00	\$7,653,000.00	\$3,181,800.00	\$25,858,500.00

ToolTip in Value Cell

		Australia			
		New South Wales	Queensland	South Australia	Tasmania
Bike	FY 2005	\$877,200.00	\$1,749,900.00	\$1,238,100.00	\$1,094,100.00
	FY 2006	\$732,000.00	\$1,184,100.00	\$456,600.00	\$1,462,500.00
	FY 2007	\$353,100.00	\$1,392,900.00	\$531,300.00	\$1,203,000.00
	FY 2008	\$531,300.00	\$680,400.00	\$2,127,300.00	\$1,833,900.00
	FY 2009	\$1,344,900.00	\$1,388,400.00	\$436,200.00	\$2,059,500.00
Bike Total		\$3,838,500.00	\$6,395,700.00	\$4,789,500.00	\$7,653,000.00

ToolTip in Column Header Cell

Res	Queensland	South Australia	Tasmania	Victoria	Australia
100.00	\$1,749,900.00	\$1,238,100.00	\$1,094,100.00	\$940,200.00	\$5,899,500.00
100.00	\$1,184,100.00	\$456,600.00	\$1,462,500.00	\$234,600.00	\$4,069,800.00
100.00	\$1,392,900.00	\$531,300.00	\$1,203,000.00	\$910,500.00	\$4,390,800.00
100.00	\$680,400.00	\$2,127,300.00	\$1,833,900.00	\$1,833,900.00	\$6,126,900.00
100.00	\$1,388,400.00	\$436,200.00	\$2,059,500.00	\$2,059,500.00	\$5,371,500.00
100.00	\$6,395,700.00	\$4,789,500.00	\$7,653,000.00	\$3,181,800.00	\$25,858,500.00
100.00	\$802,500.00	\$990,600.00	\$550,200.00	\$717,000.00	\$3,060,300.00
100.00	\$621,000.00	\$1,446,900.00	\$816,900.00	\$450,600.00	\$4,335,400.00

Custom ToolTip Template

Essential BI PivotGrid for WPF

- ToolTip Support for Header and Value Cells

ToolTips are provided for column, row, and summary headers, as well as value and summary cells. The row and column headers display their unique text as a ToolTip. Value cell ToolTips provide information about the cell and its row and column header values. Users can also customize the ToolTip template at the sample level.

	Canada		France		Germany		United Kingdom
	Amount	Quantity	Amount	Quantity	Amount	Quantity	Amount
5	\$32,575,200.00	191	\$33,292,200.00	198	\$30,714,000.00	179	\$28,980,600.00
6	\$15,625,200.00	86	\$10,742,700.00	71	\$12,546,600.00	71	\$11,745,600.00
7	\$7,337,400.00	43	\$5,133,900.00	35	\$6,322,200.00	35	\$7,012,200.00
8	\$3,365,400.00	21	\$3,042,400.00	29	\$5,042,400.00	29	\$2,756,100.00
9	\$1,123,200.00	8	\$2,210,000.00	12	\$1,496,100.00	12	\$2,202,900.00
	\$60,026,400.00	349	\$54,419,700.00	331	\$56,121,300.00	326	\$52,697,400.00
5	\$6,252,000.00	38	\$6,500,400.00	37	\$5,163,300.00	31	\$6,471,900.00

ToolTip in Value Cell

		Canada		France	
		Amount	Quantity	Amount	Quantity
[-] Bike	FY 2005	\$32,575,200.00	191	\$33,292,200.00	198
	FY 2006	\$15,625,200.00	86	\$10,742,700.00	71
	FY 2007	\$7,337,400.00	43	\$5,133,900.00	35

ToolTip in a Column Header Cell

		Canada		France		Germany		U
		Amount	Quantity	Amount	Quantity	Amount	Quantity	A
<input type="checkbox"/> Bike	FY 2005	\$32,575,200.00	191	\$33,292,200.00	198	\$30,714,000.00	179	\$
	FY 2006	\$15,625,200.00	86	\$10,742,700.00	71	\$12,546,600.00	71	\$
	FY 2007	\$7,337,400.00	43	\$5,133,900.00	31	\$6,322,200.00	35	
	FY 2008	\$3,365,400.00	21	\$3,040,500.00	21	\$2,400.00	29	
	FY 2009	\$1,123,200.00	8	\$2,210,400.00	8	\$6,100.00	12	
Bike Total		\$60,026,400.00	349	\$54,419,700.00	331	\$56,121,300.00	326	\$
<input type="checkbox"/> Car	FY 2005	\$6,252,000.00	38	\$6,500,400.00	37	\$5,163,300.00	31	

Value: \$10,742,700.00
 Row: Bike - FY 2006
 Column: France

ToolTip with Custom Template

- Context Menu Support for Expand-and-Collapse Operations

Users can expand and collapse all or any desired row or column headers containing unique text using a context menu or programmatically.

Drop Filter fields here								
Am...		Qua...		Country ▼ ▲		State ▼ ▲		
Prod... ▼ ▲		D... ▼ ▲		Canada				
		Alberta		British Columbia		Brunswick		Manitoba
		Amount	Quantity	Amount	Quantity	Amount	Quantity	Amount
<input type="checkbox"/> Bike	FY 2005	\$5,409,300.00	34	\$4,605,600.00	29	\$6,063,300.00	35	\$3,970,2
	FY 2007	\$1,128,000.00	15	\$3,162,600.00	17	\$2,914,5		
	FY 2008	\$372,000.00	8	\$1,189,500.00	6	\$1,050,3		
	FY 2009	\$416,000.00	2	\$941,400.00	5	\$723,0		
Bike Total		\$9,020,100.00	56	\$9,300,000.00	65	\$11,636,400.00	65	\$8,853,3
<input type="checkbox"/> Car	FY 2005	\$1,410,300.00	8	\$1,482,900.00	10	\$304,500.00	2	\$1,149,6
	FY 2006	\$1,003,500.00	4	\$629,700.00	3	\$245,700.00	1	\$337,8

Expand-and-Collapse Operations Available in Context Menu

■ Editing and Updating

When users edit data in value cells, data in the total cells will be updated accordingly. Values updated in the data source will be reflected in the pivot grid.

Users can set the time interval to update the edited data and customize the PivotCellInfo of the cell by customizing the editing manager.

Drop Filter fields here										
		False			True			0 Total		
		Count	Section	Weight	Count	Section	Weight	Count	Section	Weight
apple	almond									
	aqua	1234	5	28.1				1234	5	28.1
	black									
	blue									
	crimson	3	2	36.3				3	2	36.3
	green	4	3	13.7				4	3	13.7
	red									
	white									
	yellow									
apple Total		1241	10	78.1				1241	10	78.1
cherry	almond									
	aqua	2	3	29.3				2	3	29.3
	beige									
	black									
	green									
	orange									
	red									
	white									
	yellow									
cherry Total		2	3	29.3				2	3	29.3
fig	almond									

Editing Support in the PivotGrid Control

Drop Filter fields here

Am... Qua... Country ▾ ▲ State ▾ ▲

Canada

		Alberta		British Columbia		Brunswick		Manitoba		Ontario
Prod... ▾ ▲	D... ▾ ▲	Amount	Quantity	Amount	Quantity	Amount	Quantity	Amount	Quantity	Amount
Bike	FY 2005	\$6,369,600.00	39	\$4,354,200.00	29	\$6,851,700.00	37	\$6,157,500.00	34	\$6,650,400.00
	FY 2006	\$3,013,500.00	16	\$1,007,100.00	5	\$1,414,500.00	10	\$1,741,200.00	11	\$2,054,400.00
	FY 2008	\$1,022,700.00	5	\$891,600.00	5	\$1,831,800.00	10	\$645,900.00	6	\$1,192,500.00
	FY 2009			\$169,200.00	1	\$690,300.00	4	\$315,300.00	3	\$540,000.00
Bike Total		\$10,405,800.00	60	\$6,422,100.00	40	\$10,788,300.00	61	\$8,859,900.00	54	\$10,437,300.00
Car	FY 2005	\$1,657,200.00	11	\$1,072,500.00	5	\$1,134,300.00	7	\$838,200.00	6	\$314,100.00
	FY 2006			\$58,800.00	1	\$951,900.00	4			\$738,300.00
	FY 2008	\$550,200.00	3	\$245,700.00	1	\$142,500.00	1	\$58,800.00	1	\$293,700.00
	FY 2009			\$220,800.00	1			\$142,500.00	1	\$270,000.00
Car Total		\$2,207,400.00	14	\$1,597,800.00	8	\$2,228,700.00	12	\$1,039,500.00	8	\$1,616,100.00

Updating Support in PivotGrid

Essential BI PivotGrid for Windows Forms

■ PivotGrid Control

The PivotGrid control allows users to summarize selected columns and rows of data in a database table to organize it in a cross-tabulated form. With the PivotGrid control, users can add calculation values and also the desired summary type to the database table. This control enables users to summarize large amounts of data quickly.

It also supports the following:

- Users can select grid cells similar to the cell selection in Microsoft Excel to copy data to the clipboard quickly.
- Sorting enables users to quickly organize the data.
- Grouping support enables users to drag fields between different areas such as columns or rows.
- Filtering provides an easy and quick way of finding a subset of data in the database table.

		Canada			Canada Total	Grand Total							
		Alberta	Alberta Total	British Columbia	British Columbia Total	Ontario Total							
		FY 2005	FY 2006	FY 2007	FY 2005	FY 2006	FY 2007						
Canada	Alberta	1	920,700	297,000	148,500	1,366,200					1,366,200	1,366,200	
		10	8,640,000	3,240,000	1,620,000	13,500,000					13,500,000	13,500,000	
		11	14,391,300	2,937,000	881,100	18,209,400					18,209,400	18,209,400	
		2	2,410,800	882,000	352,800	3,645,600					3,645,600	3,645,600	
		3	3,666,600	1,658,700	611,100	5,936,400					5,936,400	5,936,400	
		4	6,451,200	1,036,800	460,800	7,948,800					7,948,800	7,948,800	
		5	7,267,500	2,280,000	855,000	10,402,500					10,402,500	10,402,500	
		6	9,136,800	1,522,800	1,015,200	11,674,800					11,674,800	11,674,800	
		7	5,663,700	1,953,000	390,600	8,007,300					8,007,300	8,007,300	
		8	12,364,800	3,312,000	1,545,600	17,222,400					17,222,400	17,222,400	
		9	11,547,900	1,228,500	1,719,900	14,496,300					14,496,300	14,496,300	
		Alberta Total	82,461,300	20,347,800	9,600,600	112,409,700					112,409,700	112,409,700	
		British Columbia Total				81,667,800	23,518,800	8,190,900	113,377,500		113,377,500	113,377,500	
		Ontario Total								106,854,000	106,854,000	106,854,000	
		Canada Total	82,461,300	20,347,800	9,600,600	112,409,700	81,667,800	23,518,800	8,190,900	113,377,500	106,854,000	332,641,200	332,641,200
		Grand Total	82,461,300	20,347,800	9,600,600	112,409,700	81,667,800	23,518,800	8,190,900	113,377,500	106,854,000	332,641,200	332,641,200

PivotGrid Control

Quantit	Year	Country	State	Quantity							
Product	Year	Canada									
		Alberta									
				9		8					
				Quantity		Year		Quantity			
Car	FY 2005			6		6					
	FY 2006			1		1					
	FY 2007			1		1					
Car Total				8		8		11	11	10	10
Bike	FY 2005			41		41		48	48	21	21
	FY 2006			4		4		12	12	8	8
	FY 2007			6		6		7	7	2	2
Bike Total				51		51		67	67	31	31
Grand Total				59		59		78	78	41	41

(All)

- 1
- 10
- 11
- 2
- 3
- 4
- 5
- 6
- 7
- 8

Ok Cancel

8	10	10	8
2	1	1	1
	3	3	1
	14	14	10
	44	44	43
	8	8	15
	3	3	5

Cell Selection, Sorting, Grouping, and Filtering Support in the PivotGrid Control